

BIN LIFTING SYSTEMS

FARM JACKS

COMMERCIAL JACKS

POWER UNITS



SMI & HYDRAULICS

PORTER, MN

WWW.SMIHYD.COM



ADVANCING TECHNOLOGY FOR SAFER, FASTER, EASIER LIFTING

Farm Bin Jacks

8,000 Lb - Single Sheet

The FJ44-8000 farm bin jack has an 8,000 pound lifting capacity and features a one stroke lifting motion. The bin can be raised to the proper height without stopping to change pins, saving time and increasing productivity. The farm bin jack incorporates a 3 inch bore hydraulic cylinder and an oversized ram for added safety. Each 9/16" wire rope assembly is tested and certified for peace of mind.

The FJ44-8000 is a single sheet jack and includes an adjustable tee bracket to lift short and tall sheets. All farm bin jacks come with 40 foot hoses, flat-face couplers, and a load lock valve for increased safety. Our farm bin jacks are easily disassembled for transport and tight work areas. The FJ44-8000 farm bin jacks are backed by SMI & HYDRAULICS, INC. quality workmanship pledge.



Commercial Farm Bin Jacks

15,000 Lb - Double Sheet

The CFJ88-15000 commercial farm bin jack has a 15,000 pound lifting capacity, and like all of our bin jacks, features a one stroke lifting motion. The bin can be raised to the proper height without stopping to change pins, saving time and increasing productivity. The farm bin jack incorporates a 4 inch bore hydraulic cylinder and an oversized ram for added safety. Each 9/16" wire rope assembly is tested and certified for peace of mind.

The CFJ44-15000 is a single sheet jack and includes an adjustable tee bracket to lift short and tall sheets. It is also capable of lifting on the stiffeners as well. All commercial farm bin jacks come with 40 foot hoses, flat-face couplers, and a load lock valve for increased safety. Our commercial farm bin jacks are easily disassembled for transport and tight work areas. The CFJ44-15000 commercial farm bin jacks are backed by SMI & HYDRAULICS, INC. quality workmanship pledge.



Commercial Bin Jacks

20 - 30,000 Lb - Double Sheet

The CJ88-20000 commercial bin jack has a 20,000 pound lifting capacity, and features a two sheet lifting capability. The bin can be raised two times before reconnecting the bin lift bracket, saving time and increasing productivity. The commercial bin jack incorporates a 4 inch bore hydraulic cylinder and an oversized ram for added safety. Each 5/8" wire rope assembly is tested and certified for peace of mind. All commercial bin jacks also come with 40 foot hoses, flat face couplers, and a load lock valve.



20,000 lb CJ88-20000



30,000 lb CDL72-30000

Interchangeable bin connection brackets are available for all bin corrugations and bolt patterns. Commercial bin jacks are available with various capacities from 15,000 pounds to 30,000 pounds, including the CDL72-30000 direct lift model. The commercial bin jacks are backed by SMI & HYDRAULICS, INC. quality workmanship pledge.

Tower Dryer Jacks

30,000 Lb Capacity

The DJ110-30000 commercial tower dryer jack has a 30,000 lb. lifting capacity, and features a 110" range of travel. The tower dryer jack takes the place of two electric dryer jacks giving the builder more space to work around the dryer, saving time and increasing productivity. Coupled to our unified hydraulic power unit, the jacks will lift the dryer smoothly and level.

The DJ110-30000 dryer jack incorporates a 4" bore hydraulic cylinder and an oversized ram for added safety. Each jack comes with lifting brackets and shackles certified for lifting applications. All tower dryer jacks come with hoses, flat face couplers and a load lock valve for added safety. The tower dryer jacks are backed by SMI & Hydraulics, Inc. quality workmanship pledge.



Compact Unified 5 Zone

A smaller version of the original Unified 5 Zone, this unit is preferred for smaller bins as it can be removed through a bin door. The Compact Unified 5 Zone gives the builder the same unified control as the larger unified units used for commercial bins. The engine skid is similar in size to the unified skid and comes with either a 13 HP or 24 HP Honda engine and 30 gallon reservoir. The frame is mounted on casters for ease of mobility.



Compact 5 Zone Power Unit



Engine skid with 13HP Honda



Engine skid with 24HP Honda



The push-button control simplifies the bin raising process, allowing for individual zone control if needed. PLC and touch-screen control is optional.

Unified 5 Zone



Farm Power Unit

The FPU-8H13 and FPU-12H13 hydraulic power units feature 8 and 12 zones with pressure compensated orifices and built-in needle valves to make fine adjustments to jack heights. They are primarily used to operate our farm bin jacks FJ44-8000. Each unit is powered by a 13 HP Honda gas engine and includes a 10 gallon hydraulic reservoir. The power units have a sturdy tube steel frame mounted on casters for ease of mobility, and like all of our products are backed by SMI & Hydraulics, Inc. quality workmanship pledge



Unified Power Unit

5, 6, 10, 11, 12, 15 Zones are standard

PLC / PB - The 5 and 6 zone Unified systems have the option for push button or PLC controls. Both versions have the same ability; however, the PLC has a touch screen with additional monitoring features.

Engine Skid - Based on the zones, different power sources are available to power the unified lifting skid. Some of these include a 22 HP Kubota diesel engine, 20 HP electric motor, 26 HP Honda gas engine, and a 70 HP Kubota diesel engine.

Remote - The 70 HP Kubota skid comes with a remote control which allow the user to start, stop, or control throttle speed of the motor from inside the bin.

Unified - Our unified system provides an equal volume of oil to each zone regardless of pressure differences between the zones. The jacks can be preloaded to the optimal pressure before raising the bin in the unified mode. Lifting a grain bin level has never been so easy.



11 Zone Unified Power Unit

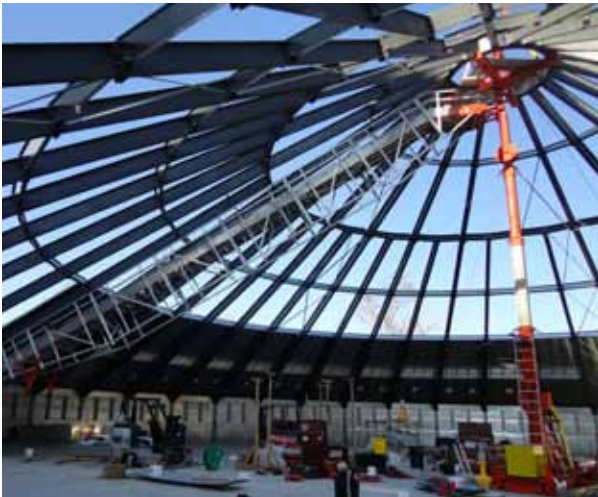


70 HP Kubota Engine Skid



Center Poles

SMI can build center poles and stairs for any size grain bin. We will customize them to your specifications. Most can be manufactured to be expandable to fit a variety of grain bin sizes. SMI can also supply scaffold brackets and hand rail for bins with tall stem walls. Give SMI a call to build whatever equipment you may need to make the bin building process safer and more efficient.



Load Lock Valves

Load lock valves hold the bin up in case a hose should break, just a 90° flip of the red control lever allows the jack to come down to reattach the bracket.



Manifolds

Manifolds come standard with flat face quick couplers with an optional number of jack connections.



Racks

SMI & Hydraulics can custom build racks to hold jacks and components for shipping and storage.



FABRICATION

ENGINEERING

HYDRAULICS



SMI & HYDRAULICS

401 LONE TREE STREET

PO BOX 95

PORTER, MN 56280-0095

PHONE: 507-296-4551

FAX: 507-296-4559

WWW.SMIHYD.COM